

**TRACT 45706 - Caddo Parish, Louisiana**

All of the lands now or formerly constituting the beds and bottoms of all water bodies of every nature and description as to which title is vested in the State of Louisiana, together with all islands arising therein and other lands formed by accretion or by reliction, where allowed by law, excepting tax adjudicated lands, and not presently under mineral lease on January 10, 2024, situated in Caddo Parish, Louisiana, and more particularly described as follows: Beginning at a point having Coordinates of X = 1,600,130.73 and Y = 669,207.24; thence South 01 degrees 30 minutes 44 seconds 5,261.18 feet to a point having Coordinates of X = 1,599,991.87 and Y = 663,947.90; thence North 88 degrees 47 minutes 49 Seconds West 5,198.74 feet to the Southeast corner of State Lease No. 22091 having Coordinates of X = 1,594,794.28 and Y = 664,057.05; thence on the east boundary of said State Lease No. 22091 the following courses: North 00 degrees 45 minutes 24 seconds East 4,245.88 feet to a point having Coordinates of X = 1,594,850.34 and Y = 668,302.56 and North 44 degrees 35 minutes 42 seconds East 1,319.54 feet to a point having Coordinates of X = 1,595,776.78 and Y = 669,242.19; thence South 89 degrees 32 minutes 24 seconds East 4,354.09 feet to the point of beginning, containing approximately **192 acres**, all as more particularly outlined on a plat on file in the Office of Mineral Resources, Department of Natural Resources. All bearings, distances and coordinates are based on Louisiana Coordinate System of 1927, (North or South Zone), where applicable.

NOTE: The above description of the Tract nominated for lease has been provided and corrected, where required, exclusively by the nomination party. Any mineral lease selected from this Tract and awarded by the Louisiana State Mineral and Energy Board shall be without warranty of any kind, either express, implied, or statutory, including, but not limited to, the implied warranties of merchantability and fitness for a particular purpose. Should the mineral lease awarded by the Louisiana State Mineral and Energy Board be subsequently modified, cancelled or abrogated due to the existence of conflicting leases, operating agreements, private claims or other future obligations or conditions which may affect all or any portion of the leased Tract, it shall not relieve the Lessee of the obligation to pay any bonus due thereon to the Louisiana State Mineral and Energy Board, nor shall the Louisiana State Mineral and Energy Board be obligated to refund any consideration paid by the Lessor prior to such modification, cancellation, or abrogation, including, but not limited to, bonuses, rentals and royalties.

NOTE: Lessee agrees not to erect any derrick, tank, warehouse or other equipment or structure on the leased premises nor shall lessee interfere in any manner, with lessor's use of the property. Lessee shall have, however, the complete right to drill for, produce, extract and recover the minerals in and beneath said land by drilling or other operations conducted from the surface of other lands or by the pooling or unitization of the leased premises with other land, lease or leases in the area.

Applicant: CYPRESS ENERGY PARTNERS, LLC

Bidder	Cash Payment	Price/Acre	Rental	Oil	Gas	Other



**Legend**

24010003



Active\_Leases



CADDO

T18N - R14W

CROSS LAKE

P.O.B.

T17N - R14W

SL 22091

0 2,000 Feet





**TRACT 45707 - Bossier and Caddo Parishes, Louisiana**

All of the lands now or formerly constituting the beds and bottoms of all water bodies of every nature and description as to which title is vested in the State of Louisiana, together with all islands arising therein and other lands formed by accretion or by reliction, where allowed by law, excepting tax adjudicated lands, and not presently under mineral lease on January 10, 2024, situated in Bossier and Caddo Parishes, Louisiana, and more particularly described as follows: Beginning at a point having Coordinates of X = 1,679,992.88 and Y = 603,917.81; thence Westerly approximately 2,649 feet to the Northeast corner of State Lease No. 19483 and the Southeast corner of State Lease No. 6856, as amended; thence Northerly approximately 2,774 feet along the East boundary of said State Lease No. 6856, as amended, to a point on the South boundary of State Lease No. 5849; thence Easterly approximately 2,474 feet and Northerly approximately 2,465 feet along the boundaries of said State Lease No. 5849 to a point; thence Easterly approximately 1,246 feet to the most westerly Southwest corner of State Lease No. 20445 having Coordinates of X = 1,681,099.25 Y = 609,239.99; thence along the boundary of said State Lease No. 20445, as amended, the following: South 89 degrees 45 minutes 03 seconds East 1,531.48 feet to a point having Coordinates of X = 1,682,630.72 and Y = 609,233.33, South 00 degrees 07 minutes 36 seconds East 5,287.92 feet to a point having Coordinates of X = 1,682,642.42 and Y = 603,945.42, and Southerly approximately 58 feet to a point being its most southern Southwest corner; thence Westerly approximately 2,650 feet to the point of beginning, containing approximately **2 acres**, all as more particularly outlined on a plat on file in the Office of Mineral Resources, Department of Natural Resources. All bearings, distances and coordinates are based on Louisiana Coordinate System of 1927, (North or South Zone), where applicable.

NOTE: The above description of the Tract nominated for lease has been provided and corrected, where required, exclusively by the nomination party. Any mineral lease selected from this Tract and awarded by the Louisiana State Mineral and Energy Board shall be without warranty of any kind, either express, implied, or statutory, including, but not limited to, the implied warranties of merchantability and fitness for a particular purpose. Should the mineral lease awarded by the Louisiana State Mineral and Energy Board be subsequently modified, cancelled or abrogated due to the existence of conflicting leases, operating agreements, private claims or other future obligations or conditions which may affect all or any portion of the leased Tract, it shall not relieve the Lessee of the obligation to pay any bonus due thereon to the Louisiana State Mineral and Energy Board, nor shall the Louisiana State Mineral and Energy Board be obligated to refund any consideration paid by the Lessor prior to such modification, cancellation, or abrogation, including, but not limited to, bonuses, rentals and royalties.

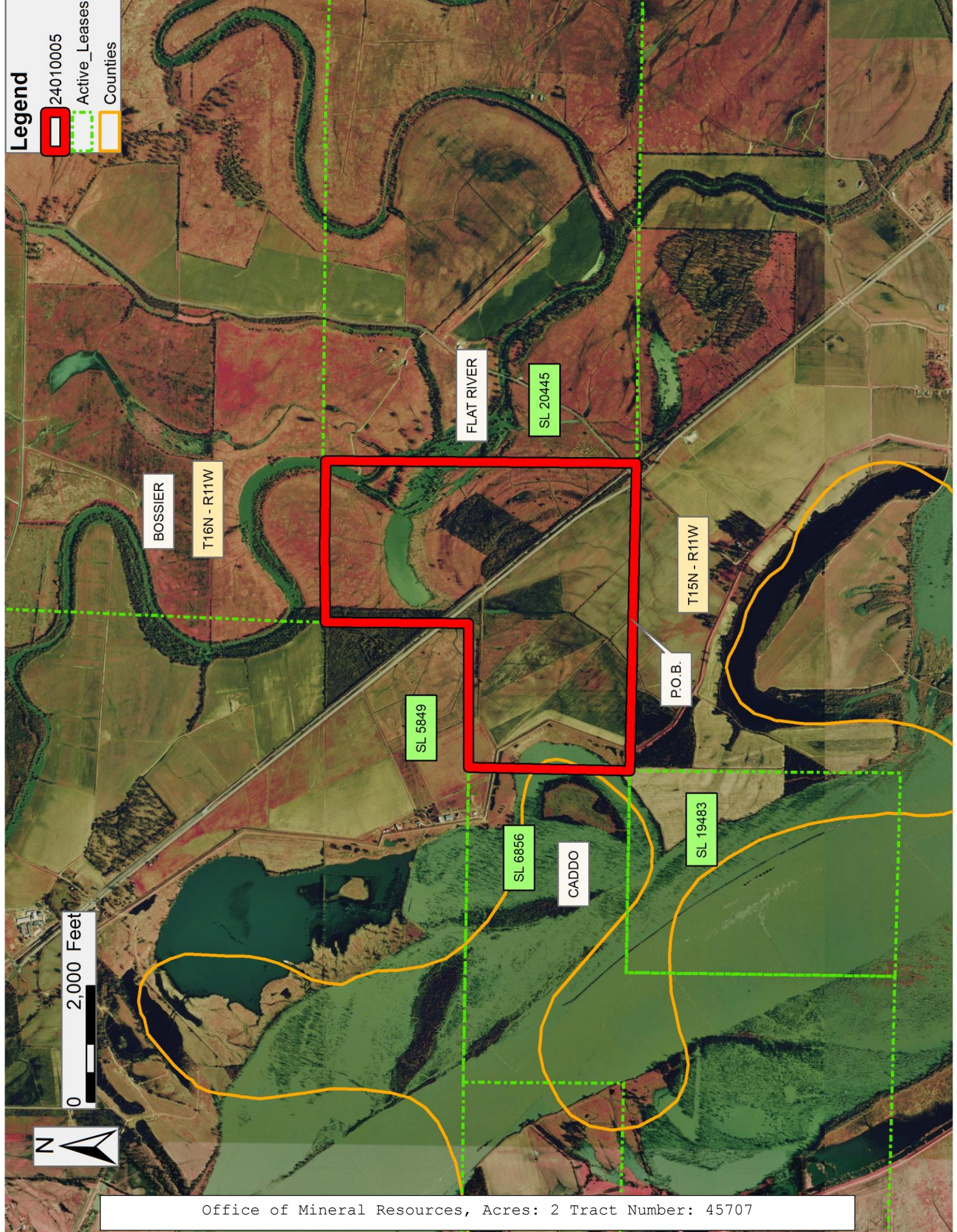
Applicant: CYPRESS ENERGY PARTNERS, LLC

Bidder	Cash Payment	Price/Acre	Rental	Oil	Gas	Other



**Legend**

- 24010005
- Active\_Leases
- Counties



Office of Mineral Resources, Acres: 2 Tract Number: 45707



**TRACT 45708 - Red River Parish, Louisiana**

All of the lands now or formerly constituting the beds and bottoms of all water bodies of every nature and description as to which title is vested in the State of Louisiana, together with all islands arising therein and other lands formed by accretion or by reliction, where allowed by law, excepting tax adjudicated lands, and not presently under mineral lease on January 10, 2024, situated in Red River Parish, Louisiana, and more particularly described as follows: Beginning at the most northern Southwest corner of State Lease No. 20039, as amended having Coordinates of X = 1,719,190.00 and Y = 518,772.50; thence along the boundaries of said State Lease No. 20039 the following courses: South 89 degrees 42 minutes 58 seconds East 5,072.57 feet, South 00 degrees 37 minutes 33 seconds West 5,265.96 feet, South 74 degrees 23 minutes 53 seconds West 535.78 feet, South 71 degrees 49 minutes 33 seconds West 514.27 feet, South 68 degrees 27 minutes 38 seconds West 507.02 feet, South 65 degrees 25 minutes 15 seconds West 509.34 feet, South 66 degrees 16 minutes 25 seconds West 487.00 feet, South 56 degrees 09 minutes 24 seconds West 517.02 feet, South 59 degrees 47 minutes 55 seconds West 506.44 feet, South 55 degrees 45 minutes 07 seconds West 498.56 feet, South 54 degrees 57 minutes 12 seconds West 503.48 feet, South 49 degrees 26 minutes 34 seconds West 497.62 feet, South 44 degrees 43 minutes 07 seconds West 565.64 feet, South 42 degrees 30 minutes 54 seconds West 130.88 feet, South 42 degrees 30 minutes 54 seconds West 428.87 feet and North 00 degrees 53 minutes 47 seconds West 3,122.03 feet to a point on the Southern boundary of State Lease No. 19999 having Coordinates of X = 1,718,925.10 and Y = 513,454.43; thence along the boundaries of said State Lease No. 19999 the following courses: North 89 degrees 59 minutes 59 seconds East 21.60 feet to a point having Coordinates of X = 1,718,946.69 and Y = 513,454.43 and North 00 degrees 35 minutes 52 seconds East 5,317.06 feet to its Northeast corner having Coordinates of X = 1,719,002.16 and Y = 518,771.20; thence North 89 degrees 36 minutes 11 seconds East 187.84 feet to the point of beginning, containing approximately **37 acres**, all as more particularly outlined on a plat on file in the Office of Mineral Resources, Department of Natural Resources. All bearings, distances and coordinates are based on Louisiana Coordinate System of 1927, (North or South Zone), where applicable.

NOTE: The above description of the Tract nominated for lease has been provided and corrected, where required, exclusively by the nomination party. Any mineral lease selected from this Tract and awarded by the Louisiana State Mineral and Energy Board shall be without warranty of any kind, either express, implied, or statutory, including, but not limited to, the implied warranties of merchantability and fitness for a particular purpose. Should the mineral lease awarded by the Louisiana State Mineral and Energy Board be subsequently modified, cancelled or abrogated due to the existence of conflicting leases, operating agreements, private claims or other future obligations or conditions which may affect all or any portion of the leased Tract, it shall not relieve the Lessee of the obligation to pay any bonus due thereon to the Louisiana State Mineral and Energy Board, nor shall the Louisiana State Mineral and Energy Board be obligated to refund any

consideration paid by the Lessor prior to such modification, cancellation, or abrogation, including, but not limited to, bonuses, rentals and royalties.

Applicant: CYPRESS ENERGY PARTNERS, LLC

Bidder	Cash Payment	Price/Acre	Rental	Oil	Gas	Other



**Legend**



24010006

Active\_Leases



0 2,000 Feet

RED RIVER

T13N - R10W

P.O.B.

SL 19999

RED RIVER

SL20039

A0242



**TRACT 45709 - De Soto and Red River Parishes, Louisiana**

All of the lands now or formerly constituting the beds and bottoms of all water bodies of every nature and description as to which title is vested in the State of Louisiana, together with all islands arising therein and other lands formed by accretion or by reliction, where allowed by law, excepting tax adjudicated lands, and not presently under mineral lease on January 10, 2024, situated in De Soto and Red River Parishes, Louisiana, and more particularly described as follows: Beginning at the Northeast corner of State Lease No. 19838, as amended having Coordinates of X = 1,703,161.41 and Y = 488,165.27; thence North 00 degrees 41 minutes 19 seconds East 5,279.47 feet to a point on the South boundary of State Lease No. 21953 having Coordinates of X = 1,703,224.87 and Y = 493,444.36; thence East 255.13 feet along the South boundary of said State Lease No. 21953 to its Southeast corner having Coordinates of X = 1,703,480.00 and Y = 493,444.36; thence South 89 degrees 09 minutes 17 seconds East 4,710.51 feet to a point on the Wboundary of State Lease No. 20040 having Coordinates of X = 1,708,190.00 and Y = 493,374.88; thence South 74.88 feet along the West boundary of said State Lease No. 20040 to its Southwest corner and the Northwest corner of State Lease No. 20156, as amended, having Coordinates of X = 1,708,190.00 and Y = 493,300.00; thence continue South 5,225.97 feet along the West boundary of said State Lease No. 20156 to a point having Coordinates of X = 1,708,190.00 and Y = 488,074.03; thence South 89 degrees 46 minutes 04 seconds West 5,028.23 feet to a point on the East boundary of said State Lease No. 19838 having Coordinates of X = 1,703,161.81 and Y = 488,053.66; thence North 00 degrees 12 minutes 26 seconds West 111.61 feet along the East boundary of said State Lease No. 19838 to the point of beginning, containing approximately **4 acres**, all as more particularly outlined on a plat on file in the Office of Mineral Resources, Department of Natural Resources. All bearings, distances and coordinates are based on Louisiana Coordinate System of 1927, (North or South Zone), where applicable.

NOTE: The above description of the Tract nominated for lease has been provided and corrected, where required, exclusively by the nomination party. Any mineral lease selected from this Tract and awarded by the Louisiana State Mineral and Energy Board shall be without warranty of any kind, either express, implied, or statutory, including, but not limited to, the implied warranties of merchantability and fitness for a particular purpose. Should the mineral lease awarded by the Louisiana State Mineral and Energy Board be subsequently modified, cancelled or abrogated due to the existence of conflicting leases, operating agreements, private claims or other future obligations or conditions which may affect all or any portion of the leased Tract, it shall not relieve the Lessee of the obligation to pay any bonus due thereon to the Louisiana State Mineral and Energy Board, nor shall the Louisiana State Mineral and Energy Board be obligated to refund any consideration paid by the Lessor prior to such modification, cancellation, or abrogation, including, but not limited to, bonuses, rentals and royalties.



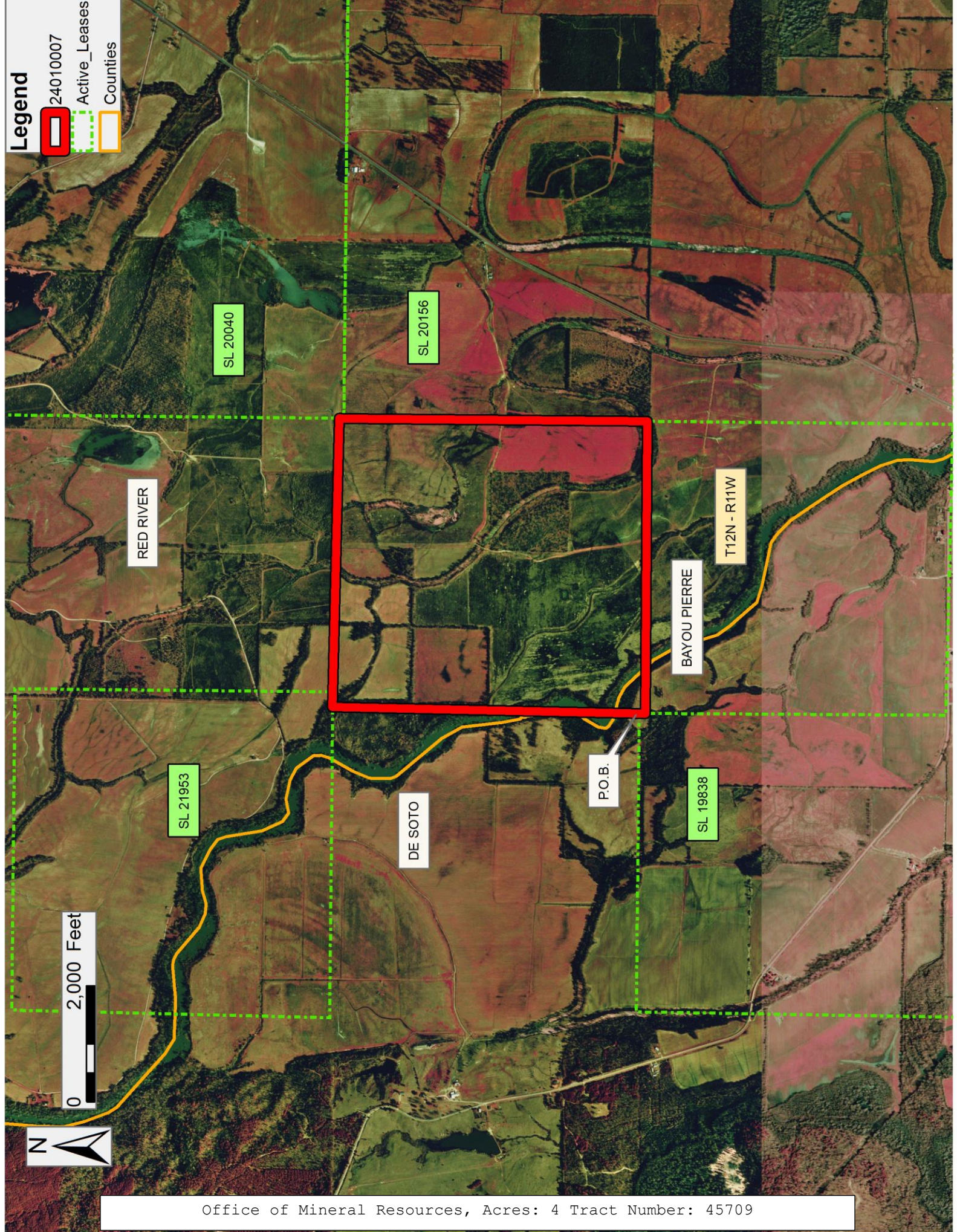
Applicant: CYPRESS ENERGY PARTNERS, LLC

Bidder	Cash Payment	Price/Acre	Rental	Oil	Gas	Other



**Legend**

- 24010007
- Active\_Leases
- Counties



Office of Mineral Resources, Acres: 4 Tract Number: 45709



**TRACT 45710 - Natchitoches and Red River Parishes, Louisiana**

All of the lands now or formerly constituting the beds and bottoms of all water bodies of every nature and description as to which title is vested in the State of Louisiana, together with all islands arising therein and other lands formed by accretion or by reliction, where allowed by law, excepting tax adjudicated lands, and not presently under mineral lease on January 10, 2024, situated in Natchitoches and Red River Parishes, Louisiana, and more particularly described as follows: Beginning at a point on the south boundary of State Lease No. 20404, as amended and the East boundary of State Lease No. 21904 having Coordinates of X = 1,750,610.43 and Y = 450,574.53; thence South 89 degrees 59 minutes 18 seconds East 5,158.53 feet along the South boundary of said State Lease No. 20404 to its Southeast corner having Coordinates of X = 1,755,768.96 and Y = 450,573.49; thence South 01 degrees 23 minutes 29 seconds East 5,451.16 feet to a point having Coordinates of X = 1,755,901.31 and Y = 445,123.94; thence North 89 degrees 10 minutes 12 seconds West 5,394.76 feet to a point on the East boundary of said State Lease No. 21904 having Coordinates of X = 1,750,507.12 and Y = 445,202.08; thence North 01 degrees 06 minutes 06 seconds East 5,373.44 feet along the East boundary of said State Lease No. 21904 to the point of beginning, containing approximately **18 acres**, all as more particularly outlined on a plat on file in the Office of Mineral Resources, Department of Natural Resources. All bearings, distances and coordinates are based on Louisiana Coordinate System of 1927, (North or South Zone), where applicable.

NOTE: The above description of the Tract nominated for lease has been provided and corrected, where required, exclusively by the nomination party. Any mineral lease selected from this Tract and awarded by the Louisiana State Mineral and Energy Board shall be without warranty of any kind, either express, implied, or statutory, including, but not limited to, the implied warranties of merchantability and fitness for a particular purpose. Should the mineral lease awarded by the Louisiana State Mineral and Energy Board be subsequently modified, cancelled or abrogated due to the existence of conflicting leases, operating agreements, private claims or other future obligations or conditions which may affect all or any portion of the leased Tract, it shall not relieve the Lessee of the obligation to pay any bonus due thereon to the Louisiana State Mineral and Energy Board, nor shall the Louisiana State Mineral and Energy Board be obligated to refund any consideration paid by the Lessor prior to such modification, cancellation, or abrogation, including, but not limited to, bonuses, rentals and royalties.

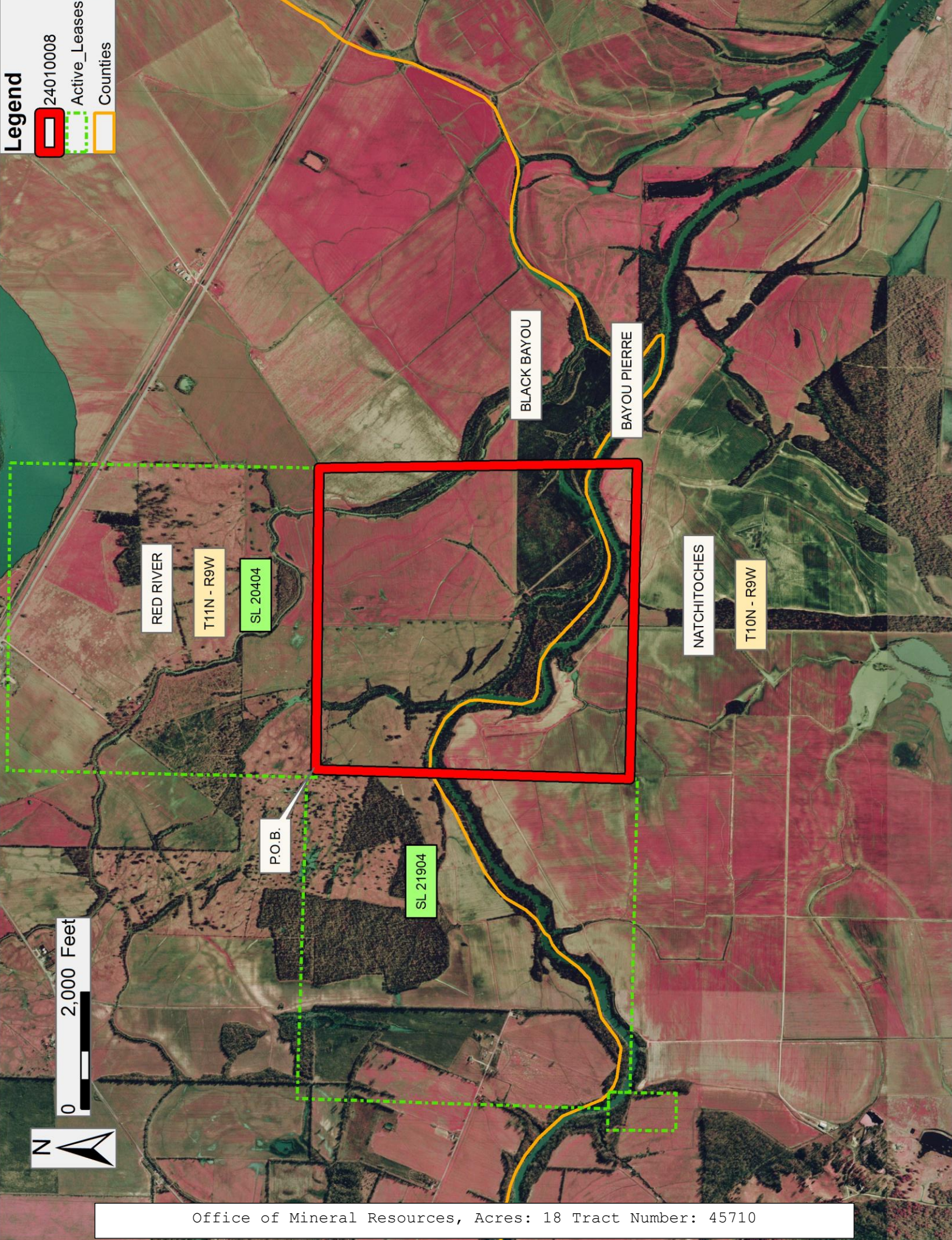
Applicant: CYPRESS ENERGY PARTNERS, LLC

Bidder	Cash Payment	Price/Acre	Rental	Oil	Gas	Other



**Legend**

- 24010008
- Active\_Leases
- Counties





**TRACT 45711 - Vermilion Parish, Louisiana**

All of the lands now or formerly constituting the beds and bottoms of all water bodies of every nature and description as to which title is vested in the State of Louisiana, together with all islands arising therein and other lands formed by accretion or by reliction, where allowed by law, excepting tax adjudicated lands, and not presently under mineral lease on January 10, 2024, situated in Vermilion Parish, Louisiana, and more particularly described as follows: Beginning at a point having Coordinates of X = 1,746,861.37 and Y = 452,181.14; thence North 09 degrees 21 minutes 44 seconds East 1,149.71 feet to a point having Coordinates of X = 1,747,048.40 and Y = 453,315.54; thence North 66 degrees 24 minutes 05 seconds East 3,062.94 feet to a point having Coordinates of X = 1,749,855.19 and Y = 454,541.72; thence South 80 degrees 38 minutes 16 seconds East 4,394.37 feet to a point having Coordinates of X = 1,754,191.03 and Y = 453,826.87; thence South 08 degrees 51 minutes 40 seconds West 2,816.26 feet to a point having Coordinates of X = 1,753,757.22 and Y = 451,044.23; thence North 80 degrees 38 minutes 16 seconds West 6,988.94 feet to the point of beginning, containing approximately **42 acres**, all as more particularly outlined on a plat on file in the Office of Mineral Resources, Department of Natural Resources. All bearings, distances and coordinates are based on Louisiana Coordinate System of 1927, (North or South Zone), where applicable.

NOTE: The above description of the Tract nominated for lease has been provided and corrected, where required, exclusively by the nomination party. Any mineral lease selected from this Tract and awarded by the Louisiana State Mineral and Energy Board shall be without warranty of any kind, either express, implied, or statutory, including, but not limited to, the implied warranties of merchantability and fitness for a particular purpose. Should the mineral lease awarded by the Louisiana State Mineral and Energy Board be subsequently modified, cancelled or abrogated due to the existence of conflicting leases, operating agreements, private claims or other future obligations or conditions which may affect all or any portion of the leased Tract, it shall not relieve the Lessee of the obligation to pay any bonus due thereon to the Louisiana State Mineral and Energy Board, nor shall the Louisiana State Mineral and Energy Board be obligated to refund any consideration paid by the Lessor prior to such modification, cancellation, or abrogation, including, but not limited to, bonuses, rentals and royalties.

Applicant: RELIANT LAND SERVICES, L.L.C.

Bidder	Cash Payment	Price/Acre	Rental	Oil	Gas	Other



Legend



24010009

VERMILION

T13S - R3E

VERMILION RIVER

P.O.B.

0 2,000 Feet





**TRACT 45712 - Vermilion Parish, Louisiana**

All of the lands now or formerly constituting the beds and bottoms of all water bodies of every nature and description as to which title is vested in the State of Louisiana, together with all islands arising therein and other lands formed by accretion or by reliction, where allowed by law, excepting tax adjudicated lands, and not presently under mineral lease on January 10, 2024, situated in Vermilion Parish, Louisiana, and more particularly described as follows: Beginning at a point having Coordinates of X = 1,748,760.98 and Y = 446,261.66; thence North 09 degrees 21 minutes 44 seconds East 5,531.62 feet to a point having Coordinates of X = 1,749,660.83 and Y = 451,719.60; thence South 80 degrees 38 minutes 16 seconds East 4,151.69 feet to a point having Coordinates of X = 1,753,757.22 and Y = 451,044.23; thence South 08 degrees 51 minutes 40 seconds West 5,495.11 feet to a point having Coordinates of X = 1,752,910.75 and Y = 445,614.71; thence North 81 degrees 08 minutes 20 seconds West 4,199.90 feet to the point of beginning, containing approximately **42 acres**, all as more particularly outlined on a plat on file in the Office of Mineral Resources, Department of Natural Resources. All bearings, distances and coordinates are based on Louisiana Coordinate System of 1927, (North or South Zone), where applicable.

NOTE: The above description of the Tract nominated for lease has been provided and corrected, where required, exclusively by the nomination party. Any mineral lease selected from this Tract and awarded by the Louisiana State Mineral and Energy Board shall be without warranty of any kind, either express, implied, or statutory, including, but not limited to, the implied warranties of merchantability and fitness for a particular purpose. Should the mineral lease awarded by the Louisiana State Mineral and Energy Board be subsequently modified, cancelled or abrogated due to the existence of conflicting leases, operating agreements, private claims or other future obligations or conditions which may affect all or any portion of the leased Tract, it shall not relieve the Lessee of the obligation to pay any bonus due thereon to the Louisiana State Mineral and Energy Board, nor shall the Louisiana State Mineral and Energy Board be obligated to refund any consideration paid by the Lessor prior to such modification, cancellation, or abrogation, including, but not limited to, bonuses, rentals and royalties.

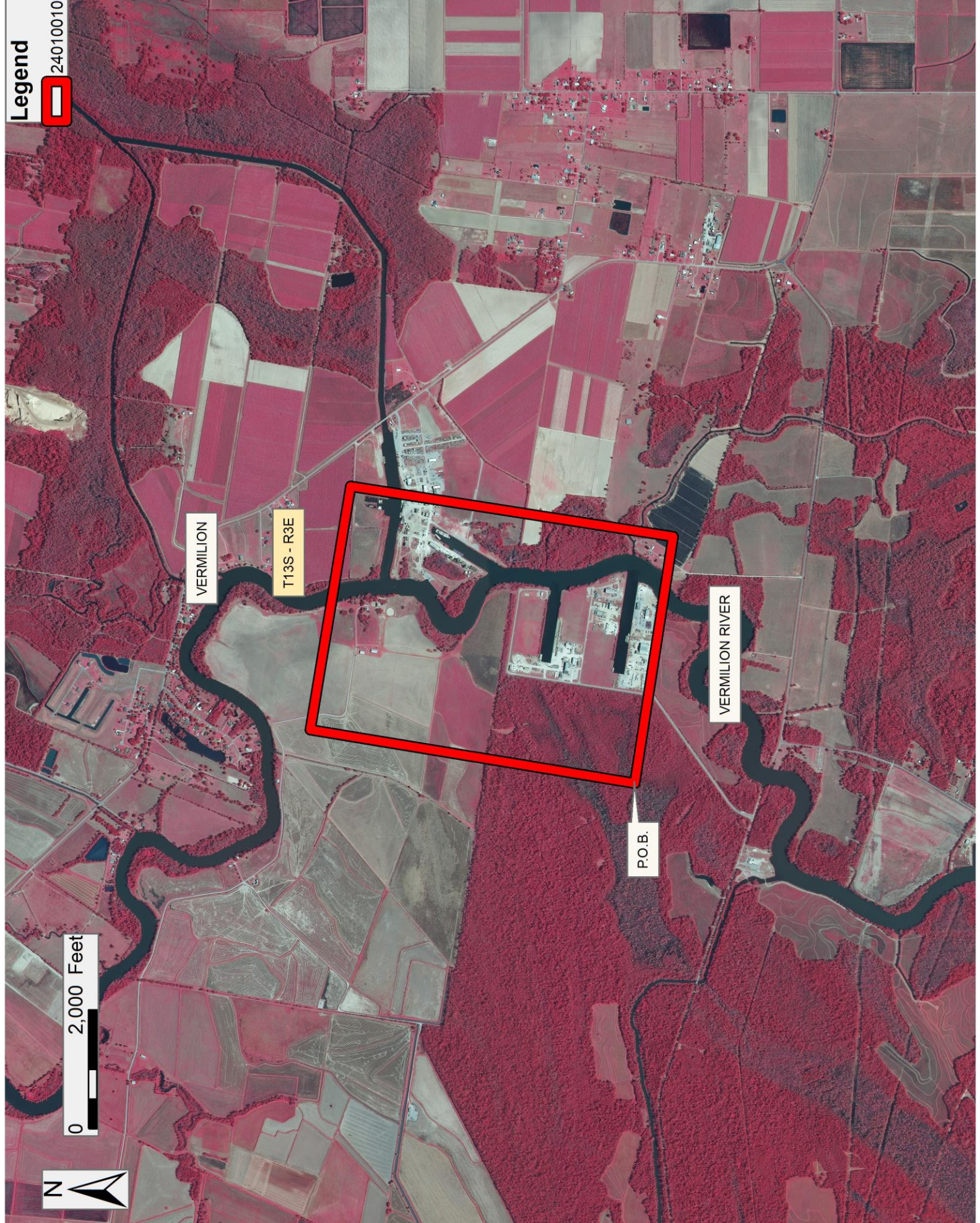
Applicant: RELIANT LAND SERVICES, L.L.C.

Bidder	Cash Payment	Price/Acre	Rental	Oil	Gas	Other



Legend

24010010





**TRACT 45713 - Vermilion Parish, Louisiana**

All of the lands now or formerly constituting the beds and bottoms of all water bodies of every nature and description as to which title is vested in the State of Louisiana, together with all islands arising therein and other lands formed by accretion or by reliction, where allowed by law, excepting tax adjudicated lands, and not presently under mineral lease on January 10, 2024, situated in Vermilion Parish, Louisiana, and more particularly described as follows: Beginning at a point having Coordinates of X = 1,748,760.98 and Y = 446,261.66; thence South 81 degrees 08 minutes 20 seconds East 4,199.90 feet to a point having Coordinates of X = 1,752,910.75 and Y = 445,614.71; thence South 08 degrees 51 minutes 40 seconds West 466.80 feet to a point having Coordinates of X = 1,752,838.85 and Y = 445,153.48; thence South 58 degrees 27 minutes 07 seconds West 2,883.00 feet to a point having Coordinates X = 1,750,381.95 and Y = 443,645.05; thence North 70 degrees 51 minutes 58 seconds West 2,054.85 feet to a point having Coordinates of X = 1,748,440.62 and Y = 444,318.58; thence North 09 degrees 21 minutes 44 seconds East 1,969.31 feet to the point of beginning, containing approximately **31 acres**, all as more particularly outlined on a plat on file in the Office of Mineral Resources, Department of Natural Resources. All bearings, distances and coordinates are based on Louisiana Coordinate System of 1927, (North or South Zone), where applicable.

NOTE: The above description of the Tract nominated for lease has been provided and corrected, where required, exclusively by the nomination party. Any mineral lease selected from this Tract and awarded by the Louisiana State Mineral and Energy Board shall be without warranty of any kind, either express, implied, or statutory, including, but not limited to, the implied warranties of merchantability and fitness for a particular purpose. Should the mineral lease awarded by the Louisiana State Mineral and Energy Board be subsequently modified, cancelled or abrogated due to the existence of conflicting leases, operating agreements, private claims or other future obligations or conditions which may affect all or any portion of the leased Tract, it shall not relieve the Lessee of the obligation to pay any bonus due thereon to the Louisiana State Mineral and Energy Board, nor shall the Louisiana State Mineral and Energy Board be obligated to refund any consideration paid by the Lessor prior to such modification, cancellation, or abrogation, including, but not limited to, bonuses, rentals and royalties.

NOTE: The State of Louisiana does hereby reserve, and this lease shall be subject to, the imprescriptible right of surface use in the nature of a servitude in favor of the Department of Natural Resources, including its Offices and Commissions, for the sole purpose of implementing, constructing, servicing and maintaining approved coastal zone management and/or restoration projects. Utilization of any and all rights derived under this lease by the mineral lessee, its agents, successors or assigns, shall not interfere with nor hinder the reasonable surface use by the Department of Natural Resources, its Offices or Commissions, as herein above reserved.



Applicant: RELIANT LAND SERVICES, L.L.C.

Bidder	Cash Payment	Price/Acre	Rental	Oil	Gas	Other



Legend



24010011

0 2,000 Feet



VERMILION

T13S - R3E

P.O.B.

VERMILION RIVER



**TRACT 45714 - Vermilion Parish, Louisiana**

All of the lands now or formerly constituting the beds and bottoms of all water bodies of every nature and description as to which title is vested in the State of Louisiana, together with all islands arising therein and other lands formed by accretion or by reliction, where allowed by law, excepting tax adjudicated lands, and not presently under mineral lease on January 10, 2024, situated in Vermilion Parish, Louisiana, and more particularly described as follows: Beginning at a point having Coordinates of X = 1,745,105.05 and Y = 441,833.48, said point also being the Northwest corner of State Lease No. 22022; thence North 00 degrees 00 minutes 02 seconds West 3,642.36 feet to a point having Coordinates of X = 1,745,105.01 and Y = 445,475.84; thence South 70 degrees 51 minutes 58 seconds East 5,585.51 feet to a point having Coordinates of X = 1,750,381.95 and Y = 443,645.05; thence South 00 degrees 00 minutes 02 seconds East 3,672.29 feet to a point being the Northeast corner of said State Lease No. 22022 having Coordinates of X = 1,750,381.99 and Y = 439,972.75; thence North 70 degrees 34 minutes 36 seconds West 5,595.40 feet along the North boundary of said State Lease No. 22022 to the point of beginning, containing approximately **33 acres**, all as more particularly outlined on a plat on file in the Office of Mineral Resources, Department of Natural Resources. All bearings, distances and coordinates are based on Louisiana Coordinate System of 1927, (North or South Zone), where applicable.

NOTE: The above description of the Tract nominated for lease has been provided and corrected, where required, exclusively by the nomination party. Any mineral lease selected from this Tract and awarded by the Louisiana State Mineral and Energy Board shall be without warranty of any kind, either express, implied, or statutory, including, but not limited to, the implied warranties of merchantability and fitness for a particular purpose. Should the mineral lease awarded by the Louisiana State Mineral and Energy Board be subsequently modified, cancelled or abrogated due to the existence of conflicting leases, operating agreements, private claims or other future obligations or conditions which may affect all or any portion of the leased Tract, it shall not relieve the Lessee of the obligation to pay any bonus due thereon to the Louisiana State Mineral and Energy Board, nor shall the Louisiana State Mineral and Energy Board be obligated to refund any consideration paid by the Lessor prior to such modification, cancellation, or abrogation, including, but not limited to, bonuses, rentals and royalties.

NOTE: The State of Louisiana does hereby reserve, and this lease shall be subject to, the imprescriptible right of surface use in the nature of a servitude in favor of the Department of Natural Resources, including its Offices and Commissions, for the sole purpose of implementing, constructing, servicing and maintaining approved coastal zone management and/or restoration projects. Utilization of any and all rights derived under this lease by the mineral lessee, its agents, successors or assigns, shall not interfere with nor hinder the reasonable surface use by the Department of Natural Resources, its Offices or Commissions, as herein above reserved.

Applicant: RELIANT LAND SERVICES, L.L.C.

Bidder	Cash Payment	Price/Acre	Rental	Oil	Gas	Other



**Legend**

24010012

Active\_Leases

0 2,000 Feet



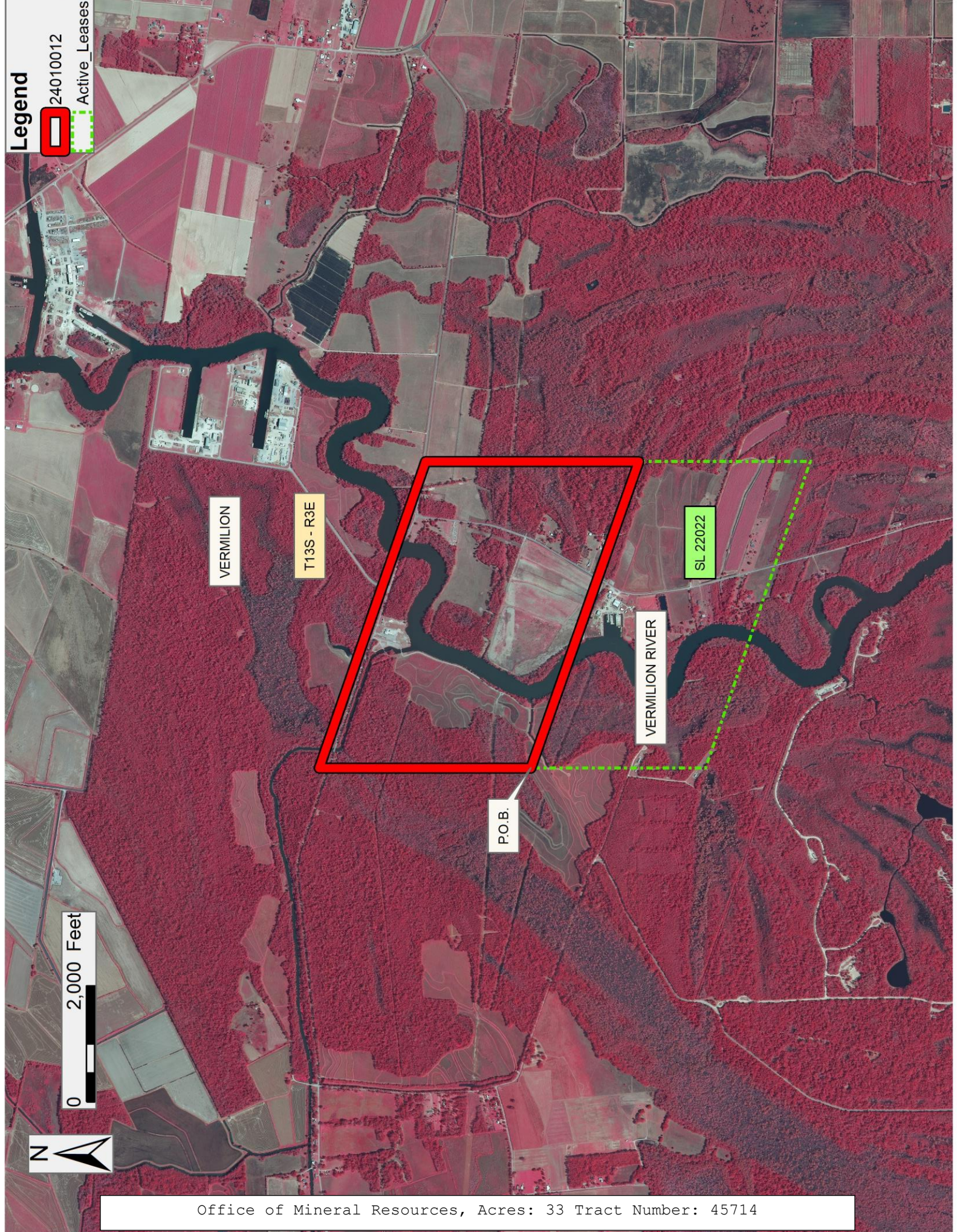
VERMILION

T13S - R3E

SL 22022

VERMILION RIVER

P.O.B.





**TRACT 45715 - Vermilion Parish, Louisiana**

All of the lands now or formerly constituting the beds and bottoms of all water bodies of every nature and description as to which title is vested in the State of Louisiana, together with all islands arising therein and other lands formed by accretion or by reliction, where allowed by law, excepting tax adjudicated lands, and not presently under mineral lease on January 10, 2024, situated in Vermilion Parish, Louisiana, and more particularly described as follows: Beginning at a point having Coordinates of X = 1,744,620.01 and Y = 438,984.52; thence South 71 degrees 08 minutes 55 seconds East 512.56 feet to a point being the Southwest corner of State Lease No. 22022 having Coordinates of X = 1,745,105.08 and Y = 438,818.90; thence South 71 degrees 08 minutes 56 seconds East 5,576.03 feet along the South boundary of said State Lease No. 22022 to a point being its Southeast corner having Coordinates of X = 1,750,382.02 and Y = 437,017.24; thence South 71 degrees 08 minutes 56 seconds East 946.55 feet to a point having Coordinates of X = 1,751,277.80 and Y = 436,711.40; thence South 5,210.85 feet to a point having the Coordinates X = 1,751,277.80 and Y = 431,500.55; thence North 70 degrees 51 minutes 47 seconds West 7,047.23 feet to a point having the Coordinates X = 1,744,620.01 and Y = 433,810.82; thence North 5,173.70 feet to the point of beginning, (This tract includes only waterbottoms claimed and owned by the state and specifically excludes any land which the state may claim or own and to which the mineral rights are vested in the state), containing approximately **51 acres**, all as more particularly outlined on a plat on file in the Office of Mineral Resources, Department of Natural Resources. All bearings, distances and coordinates are based on Louisiana Coordinate System of 1927, (North or South Zone), where applicable.

NOTE: The above description of the Tract nominated for lease has been provided and corrected, where required, exclusively by the nomination party. Any mineral lease selected from this Tract and awarded by the Louisiana State Mineral and Energy Board shall be without warranty of any kind, either express, implied, or statutory, including, but not limited to, the implied warranties of merchantability and fitness for a particular purpose. Should the mineral lease awarded by the Louisiana State Mineral and Energy Board be subsequently modified, cancelled or abrogated due to the existence of conflicting leases, operating agreements, private claims or other future obligations or conditions which may affect all or any portion of the leased Tract, it shall not relieve the Lessee of the obligation to pay any bonus due thereon to the Louisiana State Mineral and Energy Board, nor shall the Louisiana State Mineral and Energy Board be obligated to refund any consideration paid by the Lessor prior to such modification, cancellation, or abrogation, including, but not limited to, bonuses, rentals and royalties.

NOTE: The State of Louisiana does hereby reserve, and this lease shall be subject to, the imprescriptible right of surface use in the nature of a servitude in favor of the Department of Natural Resources, including its Offices and Commissions, for the sole purpose of implementing, constructing, servicing and maintaining approved coastal zone management and/or restoration projects. Utilization of any and all rights derived under this



lease by the mineral lessee, its agents, successors or assigns, shall not interfere with nor hinder the reasonable surface use by the Department of Natural Resources, its Offices or Commissions, as herein above reserved.

Applicant: RELIANT LAND SERVICES, L.L.C.

Bidder	Cash Payment	Price/Acre	Rental	Oil	Gas	Other



**Legend**

24010013



Active\_Leases



0 2,000 Feet

Office of Mineral Resources, Acres: 51 Tract Number: 45715

VERMILION

T13S - R3E

SL 22022

P.O.B.

T14S - R3W

VERMILION RIVER

